



IDC5 software update  
**TRUCK 45.0.0**

**TEXA**

# IDC5 TRUCK software update 45.0.0

The new diagnostic features included in the IDC5 TRUCK update 45 allow working on a large number of vehicles that belong to makes of the most popular manufacturers. The work TEXA's developers carried out on industrial vehicles, light commercial vehicles and buses guarantees

all mechanics the opportunity to use diagnostic tools that are always updated and state-of-the-art, to operate successfully on the vast majority of vehicles on the road.

The TRUCK update 45 also offers new, very useful Wiring Diagrams and DASHBOARDS.

## WORLDWIDE MARKET

### CHEVROLET / ISUZU:

• The new model D-MAX [02>] 2.5 TD was developed with the following systems:

- ABS;
- Airbag;
- Body computer;
- Immobiliser;
- Diesel injection;
- Transfer case;
- Service warning light.

### CITROËN:

• The new model Berlingo [14>] (B9e) EV was developed with the following systems:

- ABS;
- Anti-theft system;
- Airbag;
- Body computer;
- A/C system;
- Comfort system;
- Emergency call;
- Multi-function display;
- Steering column switch unit;
- Trailer control unit;
- Hands-free system;
- CD multiplayer;
- Navigation system;
- Tyre pressure;
- Parking assist;
- Radio;
- Dusk sensor;

• Instrumentation.

• The new model Berlingo M59 engine 1.6i 16V Flex Kat was developed with the following systems:

- ABS;
- Airbag;
- Anti-theft system;
- Radio;
- Body computer;
- Door locking;
- Multi-function display;
- Immobiliser;
- Flex Fuel injection;
- CD multiplayer;
- Auxiliary heating;
- Instrumentation.

### COBUS:

• The new model Series 2000 & 3000 Euro 3 - EM3 was developed with the following systems:

- Automatic transmission;
- Diesel injection;
- Network system;
- Motor vehicle control;
- Instrumentation;
- Tachograph.

• The new model Series 2000 & 3000 Euro 4 / Euro 5 / EEV - E5 was developed with the following systems:

- Automatic transmission;
- Diesel injection;

- Motor vehicle control;
- Instrumentation;
- Tachograph.
- The new model Series 2000 & 3000 Euro 6 - EM4 was developed with the following systems:
  - Automatic transmission;
  - Multi-function display;
  - Diesel injection;
  - Network system;
  - Motor vehicle control.

## **DAF:**

- The new model XF M.Y. 2017 Euro 6 was developed with the following systems:
  - Advanced Driver Assistance Systems (ACC – LDW);
  - Automatic transmission;
  - EBS;
  - Immobilizer;
  - Diesel injection;
  - Driver's side door;
  - Motor vehicle control;
  - Auxiliary heating;
  - Power steering;
  - Compressed air reserve system;
  - Suspensions;
  - Instrumentation;
  - Tachograph;
  - Phone;
- New systems developed for the model XF M.Y. 2017:
  - ECAS5 suspension management;
  - VIC3 motor vehicle control;
  - Traxon automatic transmission.
- The ADAS systems were updated for the models LF 2001 / LF 2006 / LF 2013 Euro 6.

## **FIAT:**

- The "Active fire prevention" system reset procedure was added for the model Doblò 2010-2015.

## **FORD:**

- The Bosch EDC7 UC 31 injection system parameter list was updated for the model Cargo.

## **GAZ:**

- The new ABS 9 system was developed for the model Gazzelle.

## **HEULIEZ BUS:**

The following new systems were developed for the model GX Series:

ZF Ecolife transmission; Knorr ELC5 suspensions; EBS5 Knorr.

## **IRIZAR – Integral:**

- The new model i4 with DAF engine Euro 6 M.Y. 2017 was developed with the following systems:

- Advanced Driver Assistance Systems (ACC – LDW);
- Automatic transmission;
- A/C system;
- Gateway;
- Door management;
- Network system;
- Retarder;
- Auxiliary heating;
- Additional cooling system;
- Suspensions.

- The new model i6 with DAF engine Euro 6 M.Y. 2017 was developed with the following systems:

- Advanced Driver Assistance Systems (ACC – LDW);
- Automatic transmission;
- Interior lighting control units;
- A/C system;
- Gateway;
- Door management;
- Network system;
- Retarder;
- Auxiliary heating;
- Additional cooling system;
- Suspensions.

- The new model i6s with DAF engine Euro 6 M.Y. 2013 / M.Y. 2016 was developed with the following systems:

- Advanced Driver Assistance Systems (ACC –

LDW);

- Automatic transmission;
- A/C system;
- EBS;
- Gateway;
- Door management;
- Diesel injection;
- Network system;
- Tyre pressure;
- Retarder;
- Auxiliary heating;
- Additional cooling system;
- Sunroof system;
- Suspensions;
- Instrumentation;
- Third steering axle;
- Toilet;
- Trip Data Recorder.

• The new model i6s with DAF engine Euro 6 M.Y.

2017 was developed with the

following systems:

- Advanced Driver Assistance Systems (ACC – LDW);
- Automatic transmission;
- A/C system;
- Gateway;
- Door management;
- Network system;
- Retarder;
- Auxiliary heating;
- Additional cooling system;
- Sunroof system;
- Suspensions;
- Toilet.

• The new model i8 with DAF engine Euro 6 M.Y.

2017 was developed with the

following systems:

- Advanced Driver Assistance Systems (ACC – LDW);
- Automatic transmission;
- A/C system;
- Gateway;
- Door management;
- Network system;
- Retarder;

- Auxiliary heating;
- Additional cooling system;
- Sunroof system;
- Suspensions;
- Toilet.

## **ISUZU:**

• The new model Forward-Series engine 4HK1 was developed with the following systems:

- ABS;
- Diesel injection;
- Automatic transmission.

## **IVECO BUS:**

• The following new systems were developed for the model Crossway:

- ZF Ecolife transmission;
- Knorr ELC5 suspensions;
- EBS5 Knorr.

## **IVECO:**

• The new model Daily 16 was developed with the following systems:

- Chassis equipment and design;
- ABS;
- Advanced Driver Assistance Systems (ACC – LDW);
- Airbag;
- Body computer;
- Automatic transmission;
- A/C system;
- CNG injection;
- Multi-function display;
- Exterior lighting control unit;
- Diesel injection;
- Parking assist;
- Radio;
- Suspensions;
- Service warning light;
- Instrumentation.

• The static calibration for the lane control camera was added.

• The “Engine oil dilution evaluation” procedure was added.

• For the model Stralis M.Y. 2016:

- New activations for the injection system were added;
- The new sensor learning procedure was added for the tyre pressure management system;
- The new FCM identification reading procedure was added.
- The new ZF EST75 differential lock electronic management system was developed for the model Trakker Euro 4/5.
- The new additional water heating management system was developed for the models Stralis, Trakker, Eurocargo.
- The new ESP calibration procedure for Wabco E4.5/E8 ABS was developed for the model Eurocargo Euro 6.

### **MAN:**

- The following systems were updated for the model TGE:
  - ABS:
    - New activations and adjustments were developed.
  - Instrumentation:
    - New activations were developed;
    - Service reset procedure.
  - A/C system:
    - New activations and adjustments were developed.
  - Parking system:
    - New activations and adjustments were developed.

### **MERCEDES-BENZ:**

- Sprinter 906:
  - The following systems were developed:
    - Sunroof electronic management;
    - Radio System;
    - PSM Parameterisable Special Module system;
    - Trailer detection system;
    - Upper control panel;
  - The following adjustments were developed:
    - SCR/AdBlue system warning message reset;
    - Reset of the number of engine start-ups for the CDI60 control units.

- Actros MPIV/Antos/Arocs/Citaro Euro 6:
  - New variants were developed.
- Actros MPIII:
  - The EBS was updated with new variants.

### **NISSAN:**

- The new model NV300 was developed with the following systems:
  - ABS;
  - Parking assist;
  - Body computer;
  - Diesel injection;
  - Power steering;
  - Comfort system;
  - Instrumentation.

### **OPEL:**

- The new Selective Catalytic Reduction (SCR) system was developed for Euro 6 engines of the model Vivaro-B.

### **OSHKOSH:**

- The new model H-Series was developed with the following systems:
  - ABS;
  - Automatic transmission;
  - Diesel injection;
  - Trip Data Recorder.
- The new model MPT-Series Chassis was developed with the following systems:
  - ABS;
  - Automatic transmission;
  - Diesel injection;
  - Trip Data Recorder.
- The new model P-Series was developed with the following systems:
  - ABS;
  - Automatic transmission;
  - Diesel injection;
  - Trip Data Recorder.
- The new model S-Series was developed with the following systems:
  - ABS;
  - Automatic transmission;
  - Diesel injection;

- Trip Data Recorder.

## **RENAULT TRUCK:**

- The static calibration for the front radar system was developed for the model T-Series Euro 6.
- The procedures for the SCR system metering tests were developed for the Euro 6 models.
- The "maximum vehicle speed with pedal" adjustment in the diesel injection system was developed for the Euro 6 models.

## **PEUGEOT:**

- The new model Partner M5 engine 1.6i 16V Flex Kat was developed with the following systems:
  - ABS;
  - Airbag;
  - Anti-theft system;
  - Radio;
  - Body computer;
  - Door locking;
  - Multi-function display;
  - Immobilizer;
  - Flex Fuel injection;
  - CD multiplayer;
  - Auxiliary heating;
  - Instrumentation.
- The new model Partner 2014 engine 1.6 BlueHDI was developed with the following systems:
  - ABS;
  - Airbag;
  - Anti-theft system;
  - Radio;
  - Body computer;
  - Door locking;
  - Multi-function display;
  - Immobilizer;
  - Flex Fuel injection;
  - CD multiplayer;
  - Auxiliary heating;
  - Instrumentation.

## **SCANIA:**

- New adjustments were developed for the S8 engine control unit:
- Initialisation of the new Compressed air supply (APS) module initialisation;
- Initialisation of the new Exhaust gas treatment (EEC) module;
- The function for entering the VIN in the Exhaust gas treatment (EEC) system was developed.
- The following systems were updated for the M.Y. 2016 models:
  - TMS2 automatic transmission;
  - APS2 compressed air supply;
  - COO Coordinator module motor vehicle control;
  - EBS 7;
  - Diesel injection.

## **SILEO:**

- The new model E-Bus Series was developed.
- EBS;
- Suspensions;

## **VOLKSWAGEN:**

- The new model Amarok 2010 engine 3.0 TDI was developed with the following systems:
  - ABS;
  - Airbag;
  - Parking assist;
  - Radio;
  - Automatic transmission;
  - Trailer control unit;
  - Emergency call;
  - A/C system;
  - Differential lock electronics;
  - Immobilizer;
  - Diesel injection;
  - CAN line;
  - Navigation system;
  - Driver's side door;
  - Rear right door;
  - Rear left door;
  - Tyre pressure;

- Additional engine heating;
- Switchover board (Power unit);
- Steering angle sensor;
- Electronic information system 1;
- Instrumentation;
- Rear-view camera;
- Phone.
- The new model Crafter 2016 engine 2.0 BiTDI was developed with the following systems:
  - ABS;
  - Advanced Driver Assistance Systems (ACC – LDW);
  - Airbag;
  - Parking assist;
  - Body computer;
  - Automatic transmission;
  - A/C system;
  - Steering electronics;
  - Gateway;
  - Diesel injection;
  - Driver's side door;
  - Passenger's side door;
  - Rear right door;
  - Rear left door;
  - Tyre pressure;
  - Auxiliary heating;
  - Switchover board (Power unit);
  - Instrumentation;
  - Rear-view camera;
  - All-wheel drive.
- The following systems were updated:
  - ABS:

- New activations and adjustments were developed.
- Instrumentation:
  - New activations were developed;
  - The service reset procedure was developed.
- A/C system:
  - New activations and adjustments were developed.
- Parking system:
  - New activations and adjustments were developed.

## **VOLVO TRUCKS:**

- The static calibration for the front radar system was developed for the model FH (M.Y. 2013).
- The procedures for the Selective Catalytic Reduction (SCR) system metering tests were developed for the Euro 6 models.
- The new Wabco D/E ABS system was developed for the model VM.
- The injector disconnection test was developed for the EDC7 diesel injection.
- The maximum vehicle speed with pedal adjustment in the diesel injection system was developed.

## **WABCO:**

- The setup procedure was improved for the Wabco TEBS-E control units.
- The OptiTire tyre pressure monitoring system was updated with the learning procedure for new wheel sensors.

## **NORTH AMERICAN MARKET**

### **CUMMINS:**

- The trip data reading function was developed for the Core2 control units.
- New adjustments and parameters were developed for the Core2 control units in J1939.
- The engine hour reading function was developed for the Core2 control units in J1939.

- The after-treatment system reset function was developed for the Core2 control units in J1939.
- The EGR activation was developed for the Core2 control units in J1939.

### **DODGE:**

- The new diesel injection system for third generation engines was developed for Ram.

## **GMC:**

- The injection system was updated for 6.6L DURAMAX engines.

## **ISUZU:**

- New variants were developed for the automatic transmission control unit in the new 2018 vehicles.
- The new injection system with protocol J1708 was developed for 6HK1 engines.

## **MACK Engine:**

- The proprietary trip data reading function was developed.

## **MAXXFORCE Engine:**

The proprietary trip data reading function was developed.

## **MERCEDES-BENZ/FREIGHTLINER:**

- Sprinter 2500-3500;
- The following systems were developed:
  - Sunroof electronic management;
  - Radio system;
  - PSM Parameterisable Special Module;
  - Trailer detection;
  - Upper control panel.
- The following adjustments were developed:
  - SCR/AdBlue system warning message reset;
  - Reset of the number of engine start-ups for the CDI60 control units.

## **VOLVO TRUCK:**

- The special parameterisation function for the light system was developed for the model FH M.Y. 2015.
- The maximum vehicle speed with pedal adjustment in the injection system was developed.

# **WIRING DIAGRAMS**

## **ALLISON:**

- The new generation 3 Allison 3000-4000 diagram was associated in the vehicles in which diagnosis is available.
- The new generation 4 Allison 3000-4000 diagram was associated in the vehicles in which diagnosis is available.
- The new generation 4 Allison 1000-2000 diagram was associated in the vehicles in which diagnosis is available.

## **BOSCH-KNORR:**

- The new BOSCH-KNORR EU12/U16 diagram was associated in the vehicles in which diagnosis is available.

## **DAF:**

- The new third steering axle wiring diagram was developed for the following models:
  - CF MY 2006;

- LF MY 2006;
- XF105;
- CF MY 2013 Euro 6;
- LF MY 2013 Euro 6.

## **DENNIS EAGLE:**

- The following wiring diagrams were developed for the model Elite 2:
  - ABS Knorr 6;
  - ABS Knorr EU12/U16;
  - Diesel injection;
  - AdBlue;
  - Motor vehicle control;
  - Instrumentation.

## **HINO:**

- The new ABS wiring diagram was developed for the following models:
  - Class 6;
  - Class 7.



• The new Aisin automatic transmission wiring diagram was developed for the following models:

- Class 4;
- Class 5;
- 700 Series.

• The new diesel injection wiring diagram was developed for the following models:

- Class 4;
- Class 5.

## **IVECO:**

• The following wiring diagrams were developed for the model Stralis M.Y. 2016 Euro 6:

- Hi-TroniX automatic transmission;
- Diesel injection;
- EBS;
- Suspensions;
- Battery disconnect switch.

• The following wiring diagrams were developed for the models Cursor 9 / 11 / 13:

- Diesel injection.

• The following wiring diagrams were developed for the models Trakker Euro 5:

- AdBlue Denoxtronic 2.

## **MERCEDES-BENZ:**

• The following wiring diagrams were developed for the models Actros MP11 e MP13:

- Instrument panel.

## **VOLVO TRUCKS:**

• The following wiring diagrams were developed for the model VNL Vehicles with OBD II 16 PIN connector (M.Y. 2018):

- Cabin management;
- Tachograph;
- Human-machine interface;
- Front chassis;
- Centre chassis;
- Motor vehicle control;
- Diesel injection;
- Suspensions;
- Automatic transmission;
- EBS;
- Passenger door;

- Driver door;
- Rear chassis;
- Battery disconnect switch;
- Compressed air;
- Instrumentation;
- A/C system.
- The following wiring diagrams were developed for the model FMX M.Y. 2013:

- Cabin management;
- Tachograph;
- Human-machine interface;
- Front chassis;
- Centre chassis;
- Diesel injection;
- Suspensions;
- Automatic transmission;
- EBS;
- Passenger door;
- Driver door;
- Rear chassis;
- Battery disconnect switch;
- Compressed air;
- A/C system.

• The following wiring diagrams were developed for the model FM 12:

- Lighting;
- Heating;
- Motor vehicle control;
- Diesel injection;
- Airbag;
- Suspensions;
- Automatic transmission;
- EBS.

## **WABCO:**

• The new ABS VCSII wiring diagram was associated in the vehicles in which diagnosis is available.

# DASHBOARDS

## **CATERPILLAR:**

- New Caterpillar diesel injection dashboards were developed for the vehicles in which diagnosis is available.

## **CHEVROLET:**

- The new diesel injection dashboard was developed for the following vehicles:
- Silverado [14>];
- Silverado [05>13].

## **CITROEN:**

- The new injection dashboard was developed for the model Jumper (U9) with 3.0 HDi engine.

## **CUMMINS:**

- New Cummins J1708 diesel injection dashboards were developed for the vehicles in which diagnosis is available.

## **FIAT:**

- The new diesel injection dashboard was developed for the following models:
- Ducato (X290) FL [14>] with 2.0 MJ engine;
- Ducato (X290) FL [14>] with 2.3 MJ engine;
- Ducato (X290) FL [14>] with 3.0 MJ engine.

## **FORD:**

- The new diesel injection dashboard was developed for the model F-Series Super Duty with Power Stroke 7.3 engine.

## **GMC:**

- The new diesel injection dashboard was developed for the following models:
- Sierra [14>];
- Sierra [05>13];
- C Series;
- T Series.
- The new Isuzu diesel injection dashboard was developed for the following models:
- C Series;

- T Series;
- WT5500.

## **HINO:**

- The new Denso Common Rail diesel injection dashboard was developed for the following models:
- Class 4 (Series 300);
- Class 7 (Series 600);
- Class 6 (Series 600);
- 600 Series;
- 700 Series;
- 500 Series;
- Class 5 (Series 300).

## **HYUNDAI:**

- The new diesel injection dashboard was developed for the model H350.

## **ISUZU (North America):**

- The new diesel injection dashboard was developed for the following models:
- F Series;
- H Series;
- N Series.
- The new Isuzu diesel injection dashboard was developed for the following models:
- F Series;
- FRR & FTR;
- H Series.

## **IVECO:**

- The new CNG injection dashboard was developed for the following models:
- Daily 14;
- Daily 16;
- Minibus Daily 2014.
- The new CNG Metafuel injection dashboard was developed for the following models:
- EuroCargo Euro 6;
- Stralis M.Y. 2016 NP (CNG/LNG) Euro 6;
- Urbanway Euro 6.

- The new Bosch EDC 17C69 diesel injection dashboard was developed for the model Daily 16.
- The new EBS Knorr – Bremse EBS 5 dashboard was developed for the model Crossway Euro 6.

## **MACK:**

- The new diesel injection dashboard was developed for Mack III Generation.

## **MARCOPOLO:**

- The new CNG injection dashboard was developed for the model Senior.

## **MERCEDES-BENZ:**

- The ASA Additional Steering Axle dashboard was developed for the following models:
  - Actros MPIV (M.Y. 2011);
  - Antos;
  - Arocs;
  - Econic Euro 6 (956);
- The new Bosch CDI diesel injection dashboard was developed for the following models:
  - Sprinter Classic (909);
  - Sprinter 3500 (906);
  - Sprinter 2500 (906);

## **MERCEDES-BENZ (EVOBUS):**

- The ASA Additional Steering Axle dashboard was developed for the following models:
  - Citaro Euro 6;
  - Conecto Euro 6;
  - Travego Euro 6.

## **MITSUBISHI FUSO:**

- The new Bosch Euro 5 diesel injection dashboard was developed for the model Canter 4P10.

## **PEUGEOT:**

- The new injection dashboard was developed for the model Boxer (U9) with 3.0 HDi engine.

## **SCANIA:**

- The new EEC3 Exhaust gas treatment diesel injection dashboard was developed for the following models:

- G-Series M.Y. 2013;
- P-Series M.Y. 2013;
- R-Series M.Y. 2013;
- Touring Euro 6;
- Higer A30 Euro 6;
- Citywide Euro 6;
- OmniExpress Euro 6.
- The new SMS Air suspension dashboard was developed for the following models:
  - Citywide Euro 6;
  - G-Series M.Y. 2003;
  - G-Series M.Y. 2013;
  - Higer A30 Euro 6;
  - Omnicity Euro 4 / Euro 5 / EEV;
  - OmniExpress Euro 4 / Euro 5 / EEV;
  - OmniExpress Euro 6;
  - Omniline Euro 4 / Euro 5 / EEV;
  - Omnilink Euro 4 / Euro 5 / EEV;
  - P-Series M.Y. 2003;
  - P-Series M.Y. 2013;
  - R-Series M.Y. 2003;
  - R-Series M.Y. 2013;
  - Series F;
  - Series K;
  - Touring Euro 4 / Euro 5 / EEV;
  - Touring Euro 6.
- The new GMS Gearbox Management System automatic transmission dashboard was developed for the following models:
  - Citywide Euro 6;
  - G-Series M.Y. 2003;
  - G-Series M.Y. 2013;
  - Higer A30 Euro 6;
  - Omnicity Euro 4 / Euro 5 / EEV;
  - OmniExpress Euro 4 / Euro 5 / EEV;
  - OmniExpress Euro 6;
  - Omniline Euro 4 / Euro 5 / EEV;
  - Omnilink Euro 4 / Euro 5 / EEV;
  - P-Series M.Y. 2003;
  - P-Series M.Y. 2013;
  - R-Series M.Y. 2003;
  - R-Series M.Y. 2013;
  - Series F;
  - Series K;
  - Touring Euro 4 / Euro 5 / EEV;

- Touring Euro 6.
- The new EMD1 Engine management system diesel injection dashboard was developed for the following models:
- G-Series M.Y. 2016;
- P-Series M.Y. 2016;
- R-Series M.Y. 2016;
- S-Series M.Y. 2016.

### SETRA:

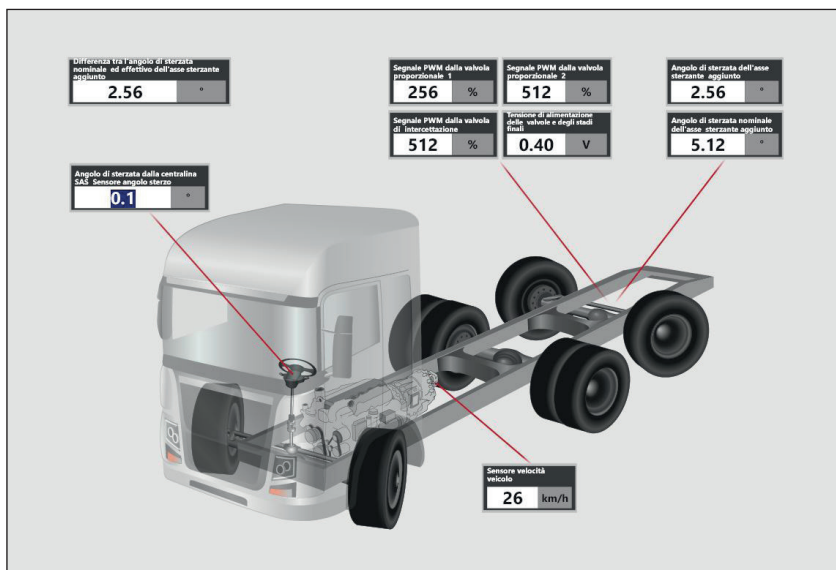
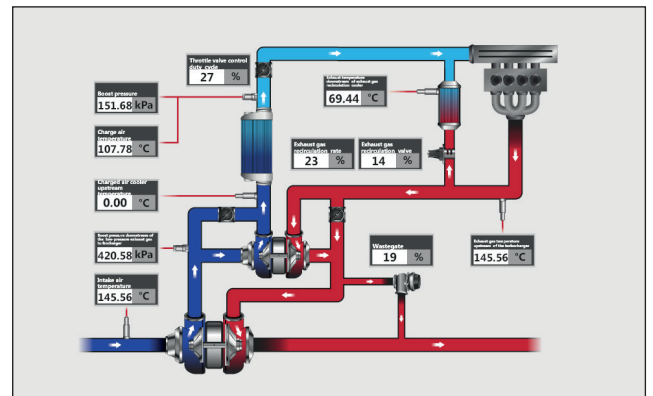
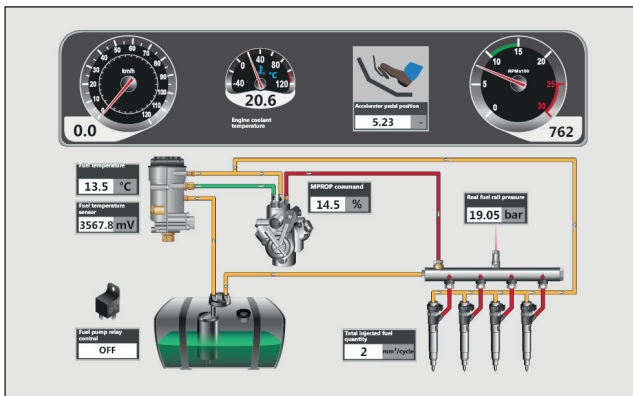
- The ASA Additional Steering Axle dashboard was developed for the following models:
- Series 400 Euro 6;
- Series 500 Euro 6.

### SINOTRUCK:

- The new automatic transmission dashboard was developed for the model HOWO A7.

### STERLING:

- The new Bosch Euro 5 diesel injection dashboard was developed for the model 360.





For further details on these functions  
and on their applicability to vehicles, visit:

[www.texa.com/coverage](http://www.texa.com/coverage)

### **IMPORTANT NOTICE**

Starting from March 2019, the new IDC5 software versions will no longer support the AXONE 4 tools with a serial number that starts by DA4. For further information contact your official TEXA distributor.

# Extended coverage of makes - Version 45

## TRUCK

AEBI  
 AGRALE  
 ASTRA  
 AUTOCAR  
 BEIFANG BENCHI  
 BREMACH  
 BSI VEICOLI  
 BUCHER-SCHÖRLING  
 CARMICHAEL  
 CATERPILLAR  
 CHEVROLET  
 CMAR  
 DAEWOO AVIA  
 DAF  
 DENNIS EAGLE  
 DONGFENG  
 DULEVO  
 EFFEDI  
 ERF  
 FAW  
 FODEN  
 FORD  
 FOTON  
 FREIGHTLINER  
 FRESIA-METROCAB  
 GAZ  
 GMC  
 HINO  
 HYUNDAI  
 INTERNATIONAL  
 ISUZU  
 ISUZU (North America)  
 IVECO  
 IVECO DVD  
 IVECO LATIN AMERICA  
 JAC  
 JOHNSTON  
 KAMAZ  
 KENWORTH  
 KRAZ

## MACK

MAN  
 MAZ  
 MERCEDES-BENZ  
 MERCEDES-BENZ  
 (BRASIL / ASIA PACIFIC)  
 MITSUBISHI FUSO  
 MULTICAR  
 NISSAN (EUROPEAN  
 MARKET)  
 O.ZETA CLES  
 OSHKOSH  
 PETERBILT  
 RAVO  
 RENAULT TRUCKS  
 SCANIA  
 SCHMIDT  
 SHAANXI  
 SHACMAN  
 SINOTRUK  
 STERLING  
 TATA DAEWOO  
 TATRA  
 TERBERG  
 TEREX  
 UD TRUCKS (NISSAN  
 DIESEL)  
 VOLKSWAGEN TRUCKS  
 VOLVO TRUCKS  
 WESTERN STAR  
  
**BUS**  
 AGRALE  
 ALEXANDER DENNIS  
 ALLEGRO  
 AMZ  
 AUTODROMO  
 AUTOSAN  
 AYATS  
 BARBI  
 BCI

## BEIFANG BENCHI

BEULAS  
 BLUE BIRD  
 BMC  
 BREDAMENARINI  
 CACCIAMALI  
 CAIO  
 CASTROSUA  
 CHEVROLET  
 COBUS  
 COMIL  
 CREDO  
 CROBUS  
 DAEWOO BUS  
 DALLA VIA  
 DE SIMON  
 E-ONE  
 FAST  
 GOLDEN DRAGON  
 GULERYUZ  
 HEULIEZ BUS  
 HINO  
 HYUNDAI  
 IRISBUS  
 IRIZAR CARROZZERIA  
 + ALTRI TELAI  
 IRIZAR - INTEGRAL  
 ISUZU  
 IVECO  
 IVECO BUS  
 IVECO LATIN AMERICA  
 KAMAZ  
 KARSAN  
 KING LONG  
 LEXEA  
 LIAZ  
 MAN  
 MARCOPOLO  
 MAZ (BUS)  
 MCI  
 MCV

## MERCEDES-BENZ

(BRASIL / ASIA PACIFIC)  
 MERCEDES-BENZ  
 (EVOBUS)  
 MERKAVIM  
 MITSUBISHI FUSO  
 NEFAZ  
 NEOPLAN  
 NOGE  
 OPTARE  
 OTOKAR  
 PAZ  
 RAMPINI  
 RENAULT BUS  
 SCANIA  
 SETRA  
 SHENLONG  
 SILEO  
 SITCAR  
 SOLARIS  
 SOLBUS  
 SOR  
 SUNSUNDEGUI  
 TATA HISPANO  
 TCV  
 TEMSA  
 TOYOTA  
 TOYOTA CAETANO  
 TVM-MARBUS  
 URSUS  
 VAN HOOL  
 VDL BERKHOF  
 VDL BOVA  
 VDL BUS & COACH  
 VDL BUS CHASSIS  
 VDL JONCKHEERE  
 VISEON BUS  
 VOLARE  
 VOLKSWAGEN BUS  
 VOLVO BUS  
 VOLZHANIN


## WRIGHT BUS


YUTONG  
  
**LIGHT VEHICLES**  
 AEBI  
 AGRALE  
 BOKIMOBIL  
 CHEVROLET  
 CITROEN  
 DACIA  
 DAIHATSU  
 DODGE  
 FIAT  
 FORD  
 FREIGHTLINER  
 GAZ  
 GMC  
 GREAT WALL  
 HYUNDAI  
 ISUZU  
 IVECO  
 IVECO LATIN AMERICA  
 KIA  
 LAND ROVER  
 LDV  
 MAHINDRA  
 MAN  
 MAZDA  
 MERCEDES-BENZ  
 MERCEDES-BENZ  
 (BRASIL / ASIA PACIFIC)  
 MITSUBISHI  
 NISSAN  
 OPEL (GM)  
 PEUGEOT  
 PIAGGIO  
 RENAULT  
 SEAT  
 SKODA  
 SOLLERS FIAT  
 SSANGYONG

## SUZUKI

TATA  
 TOYOTA  
 VICTORIA GIOTTI  
 VOLKSWAGEN  
  
**TRAILER AND  
 SEMI TRAILERS**  
 BENDIX  
 BPW  
 CARRIER TRANSICOLD  
 HALDEX  
 KNORR - BREMSE  
 MERITOR - WABCO  
 THERMO KING  
 WABASH  
 WABCO  
  
**POWER TRAIN**  
 ALLISON  
 BENDIX  
 CATERPILLAR  
 CUMMINS  
 DETROIT - MBE  
 DEUTZ  
 EATON  
 INTERNATIONAL  
 MERCEDES BENZ  
 MTU  
 MWM  
 PACCAR  
 SCANIA  
 VOITH  
 VOLVO PENTA  
 WABCO  
 WEBASTO-SPHEROS  
 ZF

## LEGEND

 Brands that offer updates in this version

 Brands that do not offer updates in this version



facebook.com/texacom



instagram.com/texacom



twitter.com/texacom



linkedin.com/company/texa



youtube.com/texacom



plus.google.com/+TEXAcom

## WARNING

The trademarks and logos of vehicle manufacturers in this document have been used exclusively for information purposes and are used to clarify the compatibility of TEXA products with the models of vehicles identified by the trademarks and logos. Because TEXA products and software are subject to continuous developments and updates, upon reading this document they may not be able to carry out the DIAGNOSTICS of all the models and electronic systems of each vehicle manufacturer mentioned within this document. References to the makes, models and electronic systems within this document must therefore be considered purely indicative and TEXA recommends to always check the list of the "Systems that can be diagnosed" of the product and/or software at TEXA authorized retailers before any purchase.

**The images and the vehicle outlines within this document have been included for the sole purpose of making it easier to identify the vehicle category (car, truck, motorbike, etc.) for which the TEXA product and/or software is intended.** The data, descriptions and illustrations may change compared to those described in this document. TEXA S.p.A. reserves the right to make changes to its products without prior notice.

The BLUETOOTH brand is the property of Bluetooth SIG, Inc., U.S.A., and is used by TEXA S.p.A. under license.

Android is a trademark of Google Inc

Copyright TEXA S.p.A.

07/2018 - Inglese



To check out the extensive coverage of TEXA products, go to: [www.texa.com/coverage](http://www.texa.com/coverage)

To check on IDC5 compatibility and minimum system requirements, go to: [www.texa.com/system](http://www.texa.com/system)



## TEXA S.p.A.

Via 1 Maggio, 9  
 31050 Monastier di Treviso  
 Treviso - ITALY  
 Tel. +39 0422 791311  
 Fax +39 0422 791300  
[www.texa.com](http://www.texa.com) - [info.it@texa.com](mailto:info.it@texa.com)

**COMPANY WITH  
 QUALITY SYSTEM  
 CERTIFIED BY DNV GL  
 = ISO 9001 =**