



IDC5 software update
TRUCK 44.0.0

TEXA

IDC5 TRUCK software update 44.0.0

The new diagnostic features included in the IDC5 TRUCK update 44 allow working on a large number of vehicles that belong to makes of the most popular manufacturers. The work TEXA's developers carried out on industrial vehicles, light commercial vehicles and buses guarantees

all mechanics the opportunity to use diagnostic tools that are always updated and state-of-the-art, to operate successfully on the vast majority of vehicles on the road.

The TRUCK 44 update also offers new, very useful Wiring Diagrams and DASHBOARDS.

WORLDWIDE MARKET

BREDAMENARINI (IIA)

New Vivacity model with FPT/NEF Euro6 engine has been developed.

New Citymood CNG model with FPT engine and Metafuel 4 injection system has been developed.

CITROËN/PEUGEOT

New Delphi DCM 6.2 injection system for 2.0 BlueHDI Euro 6 engines has been developed for vehicles:

- Jumper U9;
- Boxer U9.

DAF

New LDWS (lane control) ADS has been developed for vehicles:

- LF M.Y. 2013 Euro 6
- XF Euro 6;

New ACC (distance control) ADS has been developed for vehicles:

- LF M.Y. 2013 Euro 6
- XF Euro 6.

FIAT

Control unit alignment procedure has been modified for Ducato X250.

ISUZU

New Troubleshooting features have been added.

IVECO

New model Stralis M.Y. 2016 NP (CNG/LNG) with Metafuel 4 injection system.

New systems have been developed for Stralis M.Y 2016:

- E-Horizon radar;
- UTP navigation;
- Traxon transmission management;
- TPM tyre pressure management;
- IPC instrument panel cluster.

New instrument panel control unit variants have been developed for Eurocargo Euro 6 / Trakker Euro 6 vehicles.

New suspension control unit variants have been developed for Stralis M.Y. 2013.

New replacement procedure has been developed for EBS2 control unit installed on Stralis Euro 4/ Euro 5/EVV.

MAN

New variants have been developed for Wabco suspension system on TG-A vehicles (Euro 3 – Euro 4 - Euro 5).

New TGE model with new systems:

- Instrument cluster;
- Automatic transmission management;
- Steering column management;
- Parking control;
- Lane change assist system;
- Gateway system;
- Management system of front sensors for

- driving assistance;
- Multifunction unit system;
- Driver/passenger/rear passenger door management;
- TPM tyre pressure monitoring;
- Body computer system;
- Rear view camera system;
- ABS/ESP system;
- Additional heating system;
- Climate control system;
- Airbag system;
- All-wheel drive control system;
- Distance control system.

MERCEDES-BENZ

The camera calibration has been developed for the lane control system on Sprinter III 906 and Sprinter M.Y.2013.

The battery replacement and coolant filling procedures have been developed for Actros MPIV. The fan replacement procedure has been developed for Vario.

New parameters have been developed for BOSCH EDC 17 CDI60 selective catalytic reduction (SCR) system for engine OM642 on models Sprinter III 906 and Sprinter M.Y.2013.

MERCEDES-BENZ (EVOBUS)

For the newly manufactured Euro 6 models: Citaro / Conecto / Integro / Intouro / OC 500 / Turismo / Travergero, variants have been developed for the following control units:

- CPC vehicle engine control;
- MCM engine management;
- CGW Gateway system;
- ACM exhaust gas treatment system;
- Door management;
- VRDU driving assistance;
- CTC tachograph;
- TPM tyre monitoring;
- SAS steering control;
- MSF switch panel;
- RCM retarder management;
- EAPU air system management;
- CLCS suspension management;

- RKM recuperation module;
- IBH additional heating;
- HVAC climate control;
- ATC articulation turntable controller.

RENAULT

New TRIP DATA RECORDER system has been developed for vehicles:

- C Series Euro 6;
- D WIDE Series 18t – 26t;
- K Series Euro 6;
- T Series Euro 6.

The possibility to change VIN number of the APM module has been developed for DXI models Euro 3 - Euro 4/5.

SCANIA

The service reset based on the hours of vehicle operation has been developed.

New adjustments have been developed for S8 injection system:

- Speed limiter setting;
- Selective catalytic reduction (SCR) module initialisation;
- Compressed air supply (APS) module initialisation.

URSUS

New model City Smile 12M LF with Euro 6 Cummins engine has been developed.

VOLKSWAGEN

New model Crafter [16>] (SY-SZ) with Euro 5 / Euro 6 engine type management and new systems:

- Instrument cluster;
- Automatic transmission management;
- Steering column management;
- Parking control;
- Lane change assist system;
- Gateway system;
- Management system of front sensors for driving assistance;
- Multifunction unit system;
- Driver/passenger/rear passenger door

management;

- TPM tyre pressure monitoring;
- Body computer system;
- Rear view camera system;
- ABS/ESP system;
- Additional heating system;
- Climate control system;
- Airbag system;
- All-wheel drive control system;
- Distance control system.

New automatic transmission management system has been added for Crafter 2.5TDI.

New petrol injection system for 2.0TSI engines has been developed for Transporter / Multivan / Caravelle / California vehicles of series T5.

New 2.0TDI Euro 6 injection system has been developed for Transporter / Multivan / Caravelle / California of series T6.

New distance control system with radar calibration function has been developed for Transporter / Multivan / Caravelle / California of series T6.

VOLVO TRUCKS

New TRIP DATA RECORDER system has been developed for vehicles: FH, FE, FH 16, FL, FM, FMS (M.Y. 2013).

WABCO TRAILERS

New RSS calibration has been developed.

New TEBS variant E 5.3 has been developed.

NORTH AMERICAN MARKET

CATERPILLAR

The system has been updated, improving the diagnostic phases of the control unit detection function.

FORD

New 3.2L / 3.5L / 3.7L injection system for Transit.

FREIGHTLINER

New systems have been developed for Detroit Diesel – Mercedes Benz engine types:

- BHM Bulkhead module;
- ICU Instrument Cluster Unit;
- GTW Central Gateway;
- SHM Switch hub module;
- CHM Chassis module.

INTERNATIONAL

INTERNATIONAL engine types:

- MAXXFORCE injection system has been updated for latest-generation models, year 2017 and 2018.

ISUZU

New Troubleshooting features have been added.

MACK

- Diesel injection system (IND) has been updated with new functions;
- PUMP calibration has been developed for MS6.2 engine.

New Generation with OBD II 16 PIN connector (M.Y. 2015):

- New TRIP DATA RECORDER system has been developed.

New model "New Generation with OBD II 16 PIN connector (M.Y. 2018)" with systems:

- Radio;
- Anti-theft;
- DDM Driver Door Module;
- PDM Passenger Door Module;
- BBM Bodywork Builder Module;
- CIOM Cab I/O Module;
- CCM Climate Control Module;
- LECM Living Environment Control Module;
- TACHO Tachograph;

- SID Secondary Information Display;
- TGW2 Telematics Gateway;
- APM Air Production Modulator;
- IC Instrument Cluster;
- FCIOM Front Chassis I/O Module;
- RCIOM Rear Chassis I/O Module;
- HMIIOM Human-Machine Interface I/O Module;
- CCIOM Central Chassis I/O Module;
- EMS Engine management system;
- Electronic braking system;
- TECU Automatic transmission;
- VMCU Vehicle Master Control Unit;
- ACM Exhaust gas after-treatment control module;
- ACC – LDW Advanced Driver Assistance Systems;
- FAS Front axle steering;
- SEM Service and Entertainment module;
- TRIP DATA RECORDER.

MERCEDES/FREIGHTLINER

New parameters have been developed for BOSCH EDC 17 CDI60 selective catalytic reduction (SCR) system for engine OM642 on models Sprinter 2500 and Sprinter 3500.

MITSUBISHI FUSO

Update has been developed for newly manufactured Canter systems:

- Immobiliser;
- Injection for 4P10 engines;
- SRS Airbag system;
- DUONIC transmission;
- ICUC instrument cluster.

VOLVO Engine

Vehicles with DEUTSCH 9 PIN connector:

- New VGT solenoid valve adjustment has been developed.

Vehicles with OBD II 16 PIN connector (M.Y. 2015):

- New TRIP DATA RECORDER system has been developed.

New model "Vehicles with OBD II 16 PIN connector (M.Y. 2018)" with new systems:

- Radio;
- Anti-theft;
- DDM Driver Door Module;
- PDM Passenger Door Module;
- BBM Bodywork Builder Module;
- CIOM Cab I/O Module;
- CCM Climate Control Module;
- LECM Living Environment Control Module;
- TACHO Tachograph;
- SID Secondary Information Display;
- TGW2 Telematics Gateway;
- APM Air Production Modulator;
- IC Instrument Cluster;
- FCIOM Front Chassis I/O Module;
- RCIOM Rear Chassis I/O Module;
- HMIIOM Human-Machine Interface I/O Module;
- CCIOM Central Chassis I/O Module;
- EMS Engine management system;
- Electronic braking system;
- TECU Automatic transmission;
- VMCU Vehicle Master Control Unit;
- ACM Exhaust gas after-treatment control module;
- ACC – LDW Advanced Driver Assistance Systems;
- FAS Front axle steering;
- SEM Service and Entertainment module;
- TRIP DATA RECORDER.

WIRING DIAGRAMS

BOSCH EAS3 / DELPHI PCI MX-11, 13

Diesel injection (IND) wiring diagram has been developed for models:

IRIZAR – Integral:

- i3;
- i4;
- i6;
- i8;
- PB.

SOLARIS:

- InterUrbino;
- Urbino.

TEMSA:

- HD;
- HD 12 RHD;
- LD C;
- LD IC;
- Maraton;
- Safari HD;
- Safir Plus.

VAN HOOL:

- A 360;
- AG 300;
- AGG300;
- EX 15;
- EX 16;
- EX 17;
- TDX 20;
- TDX 21;
- TDX 25;
- TDX 27;
- TDX 29;
- TX 11;
- TX 15;
- TX 16;
- TX 17;
- TX 18;

- TX 19.

VDL Bus & Coach:

- Futura.

VDL BUS CHASSIS:

- SB4000.

YUTONG:

- TC12.

CUMMINS

New wiring diagram on diesel injection (IND) QSB6.7, versions CM2150 / CM2250, has been developed for models:

- ALEXANDER DENNIS, Enviro 500.
- AUTOSAN: A0909L Tramp School Bus; A1010T DW; A1012T Series; Eurolider A1212C.
- FORD: Cargo.
- IRIZAR – Integral: i6.
- IVECO: Powerstar.
- KING LONG:

- XMQ6106G;
- XMQ6110GS;
- XMQ6111Y;
- XMQ6117;
- XMQ6118MMC;
- XMQ6119G;
- XMQ6121G;
- XMQ6122MMC;
- XMQ6126Y;
- XMQ6127C;
- XMQ6129Y;
- XMQ6139B;
- XMQ6140Y;
- XMQ6180BRT;

10 / 18

- XMQ6728;
- XMQ6800;
- XMQ6840G;
- XMQ6868;
- XMQ6891G;

- XMQ6900;
- XMQ6996.
- TATA DAEWOO:
- Cargo;
- Dump;
- Special Purpose;
- Tractor.
- TERBERG:
- YT Series.
- VOLVO TRUCKS:
- VNL.

DAF

New ABS (Wabco E2) wiring diagram has been developed for models:

- LF MY2006;
- CF MY2006.

MERCEDES-BENZ

The following wiring diagrams have been developed for the Arocs model:

- Anti-theft (ANF);
- Passenger compartment control (CAB);
- Tachograph (CTC);
- Gateway (GTW);
- Auxiliary heating (RIS);
- Battery cut-off (SBA);
- Chassis management system (SGT);
- Compressed air reservoir system (SRA);
- Instrument cluster (STR);
- Third steering axle (TAS);
- Climate control system (CLM);
- Retarder (SFF);
- EBS;
- Passenger's side door (PLP);
- Driver's side door (POR);
- Engine vehicle control (RMV);
- Suspensions (SPS);
- Automatic transmission (CAT);
- Airbag (ARB);
- ABS;
- Diesel injection (IND) for OM470, 471, 473, 936;
- Selective catalytic reduction (SCR).

New wiring diagram on diesel injection (IND) with engine (OM936) has been

developed for Actros MPIV.

PACCAR PMCI2

New wiring diagram on diesel injection (IND) has been developed for models:

- PETERBILT (Europe / North America);
- KENWORTH (Europe / North America).

RENAULT TRUCKS

Climate control (CLM) wiring diagram has been developed for models:

- Access DXI Euro 4/5;
- Magnum DXI Euro 4/5;
- Midlum DXI Euro 4/5;
- Premium DXI Euro 4/5.

VOLVO BUS

The following wiring diagrams have been developed for models B Series & Chassis Series:

- Diesel injection (IND);
- Selective catalytic reduction (SCR);
- Automatic transmission (CAT).

VOLVO TRUCK (NORTH AMERICA):

The following wiring diagrams have been developed for VNL MY2018:

- Passenger compartment control (CAB);
- Automatic transmission (CAT);
- Climate control (CLM);
- Tachograph (CTC);
- EBS;
- Steering electronics (EVO);
- Front interface module (FFC);
- Diesel injection (IND);
- Selective catalytic reduction (SCR);
- Central interface module (MDF);
- Passenger's side door (PLP);
- Driver's side door (POR);
- Rear interface module (RFC);
- Auxiliary heating (RIS);
- Engine vehicle control (RMV);
- Battery cut-off (SBA);
- Suspensions (SPS);
- Instrument cluster (STR);

- Compressed air reservoir system (SRA).

WABCO

New ABS D Basic wiring diagram has been associated in vehicles where diagnosis is available.

New model association extension/correction

Bredamenarini (IIA):

- Avancity;
- Citymood;
- Monocar Series;
- Vivacity.

NEOPLAN:

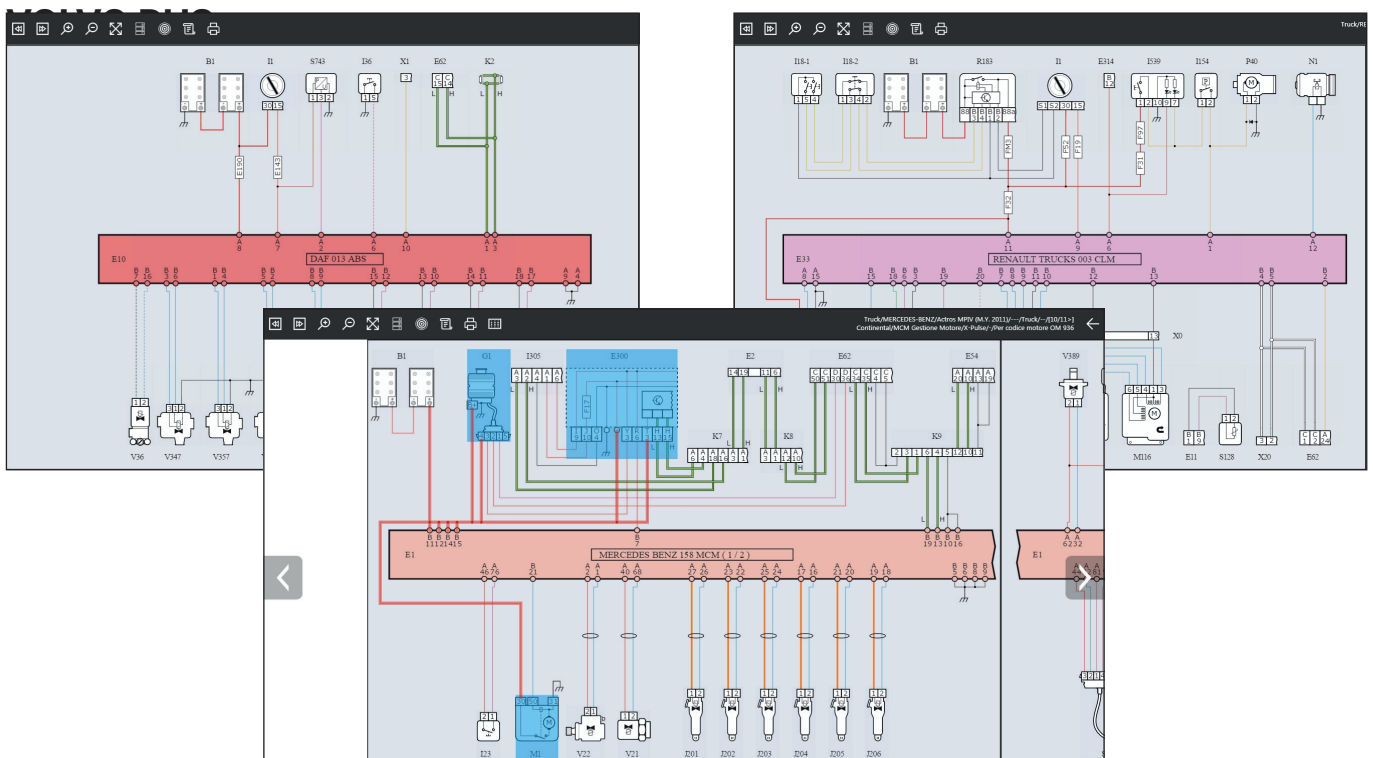
- Centroliner Euro 3 / Euro 4 / Euro 5 / EEV;
- Cityliner Euro 3 / Euro 4 / Euro 5 / EEV / Euro 6;
- Euroliner Euro 3;
- Jetliner Euro 5 / EEV / Euro 6;
- Skyliner Euro 3 / Euro 4 / Euro 5 / EEV / Euro 6;
- Starliner Euro 3 / Euro 4 / Euro 5 / EEV / Euro 6;
- Tourliner Euro 3 / Euro 6;
- Transliner Euro 2 / Euro 3;
- Trendliner Euro 3 / Euro 4/5.

- C7700;
- 7900;
- 8300;
- 8500;
- 8700;
- 8900;
- 9300;
- 9500;
- 9700;
- 9900;
- B Series & Chassis Series;
- Genesis;
- Sideral.

VOLVO TRUCKS (North America):

- Caterpillar;
- Cummins;
- Detroit Diesel;
- Volvo.

Error/wiring diagram link for ABS, EBS, Automatic transmission (CAT), Suspensions (SPS), Diesel injection (IND), Selective catalytic reduction (SCR) Systems General data sheet association
Various corrections



DASHBOARD

ALLISON

New dashboards have been developed for Allison Generation 5 automatic transmission (CAT) for the vehicles where diagnosis is available.

CITROËN-FIAT-PEUGEOT

New dashboard has been developed for ABS Bosch 8.0.

CHEVROLET

New dashboard has been developed for Allison automatic transmission (CAT), specifically for the following vehicles:

- Silverado [05>13];
- Silverado [14>].

ENGINE

Industrial engine:

- New dashboard has been developed for diesel injection (IND) SCR exhaust gas treatment system;
- New dashboard has been developed for diesel injection (IND) Euro 6 Engine management system.

FREIGHTLINER

Detroit Diesel - Mercedes Benz:

- New dashboard has been developed for Conti Temic VRDU driver assistance system (ADS).

GMC

New dashboard has been developed for Allison automatic transmission (CAT), specifically for the following vehicles:

- Sierra [05>13];
- Sierra [14>].

IVECO

New dashboards have been developed for Eurotronic 2 automatic transmission (CAT), specifically for the following vehicles:

- Stralis M.Y. 2016 NP (CNG/LNG) Euro 6;

- Euromidi M.Y. 2015 Euro 6;
- EuroCargo Euro 6;
- Trakker Euro 6;
- Stralis M.Y. 2013 Euro 6.

New Wabco ECAS suspension (SPS) CAN dashboards have been developed specifically for the following vehicles:

- Stralis M.Y. 2016 NP (CNG/LNG) Euro 6;
- Euromidi M.Y. 2013 Euro 6;
- Euromidi M.Y. 2015 Euro 6;
- EuroCargo Euro 6;
- Trakker Euro 6;
- Stralis M.Y. 2013 Euro 6;
- Stralis M.Y. 2016 Euro 6.

New Bosch EDC 17 CV 41 diesel injection (IND) dashboard has been developed specifically for the following vehicle:

- Stralis M.Y. 2016 Euro 6.

New Bosch EDC 17 diesel injection (IND) dashboard has been developed specifically for the following vehicle:

- Daily 14.

KNORR – BREMSE

Trailer:

- New dashboard has been developed for EBS TEBS Generation 2 system.

MERCEDES-BENZ

New dashboard has been developed for the third steering axle (TAS), ASA

Additional steering axle, specifically for the following vehicles:

- Arocs;
- Econic Euro 6 (956);
- Antos;
- Actros MPIV (M.Y. 2011)

New dashboard has been developed for Bosch ABS/ESP Electronic stability program 8.1 specifically for the following vehicles:

- Sprinter III (906);
- Viano (639) VAN;

- Vito (639) VAN.

MERCEDES-BENZ (BRASIL / ASIA PACIFIC)

New dashboard has been developed for Bosch ABS/ESP Electronic stability program 8.1 for the following vehicle:

- Sprinter III (906).

MERCEDES-BENZ (EVOBUS)

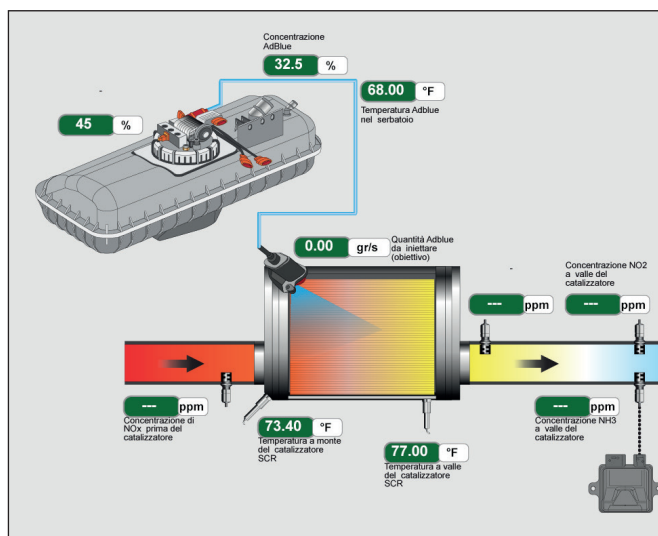
New dashboard has been developed for the third steering axle (TAS), ASA

Additional steering axle, specifically for the following vehicles:

- Conecto Euro 6;
- Travego Euro 6;
- Citaro Euro 6.

New dashboard has been developed for Bosch ABS/ESP Electronic stability program 8.1 for the following vehicles:

- Sprinter City Euro 4 / Euro 5 / EEV;
- Transfer Euro 4 / Euro 5 / EEV;
- Travel Euro 4 / Euro 5 / EEV.



RAVO

New dashboards have been developed for the 5i Series model:

- Diesel injection (IND) SCR exhaust gas treatment system;
- Diesel injection (IND) Euro 6 engine management system.

VOLKSWAGEN BUS

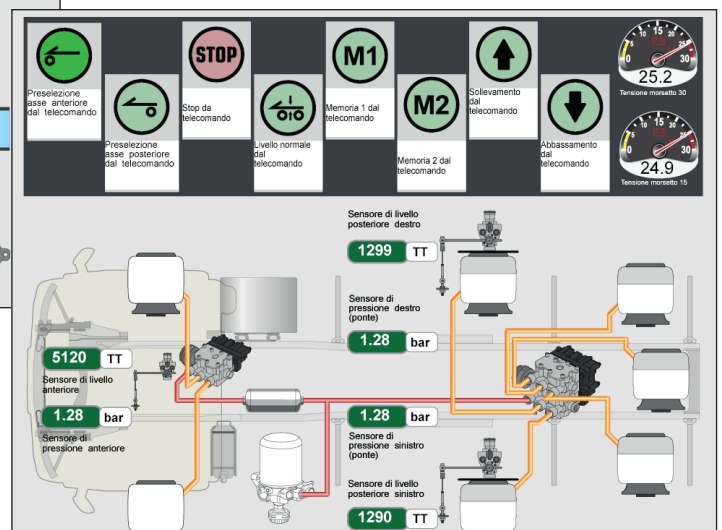
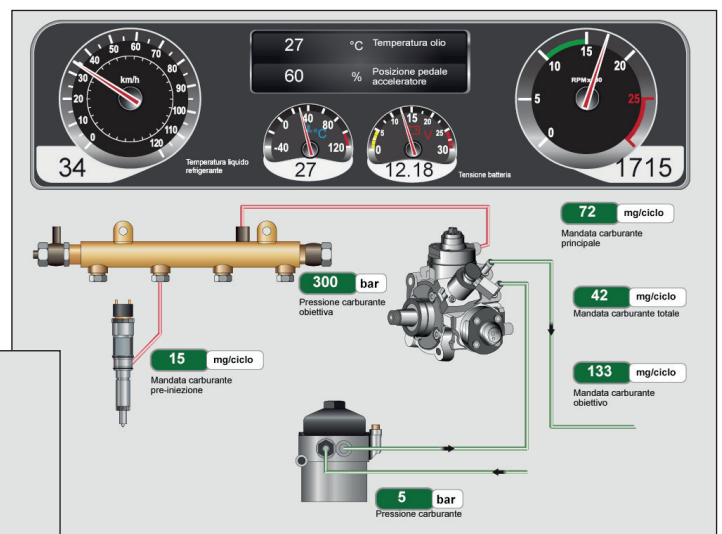
New dashboard has been developed for the Volksbus model:

- ZF V Tronic 6AS automatic transmission (CAT).

VOLKSWAGEN TRUCK

New dashboard has been developed for ZF V Tronic 6AS automatic transmission (CAT), specifically for the following vehicles:

- Constellation;
- Delivery.





For further details on these functions
and on their applicability to vehicles, visit:

www.texa.com/coverage

Extended coverage of makes - Version 44

TRUCK

AEBI
AGRALE
ASTRA
AUTOCAR
BEIFANG BENCHI
BREMACH
BSI VEICOLI
BUCHER-SCHÖRLING
CARMICHAEL
CATERPILLAR
CHEVROLET
CMAR
DAEWOO AVIA
DAF
DENNIS EAGLE
DODGE
DONGFENG
DULEVO
EFFEDI
E-ONE
ERF
FAW
FODEN
FORD
FOTON
FREIGHTLINER
FRESIA-METROCAR
GAZ
GMC
HINO
HYUNDAI
INTERNATIONAL
ISUZU
ISUZU (North America)
IVECO
IVECO DVD
IVECO LATIN AMERICA
JAC
JOHNSTON
KAMAZ
KENWORTH
KRAZ
MACK
MAN
MAZ
MERCEDES-BENZ

MERCEDES-BENZ (BRASIL /
ASIA PACIFIC)
MITSUBISHI FUSO
MULTICAR
NISSAN (EUROPEAN MAR-
KET)
O.ZETA CLES
PETERBILT
RAVO
RENAULT TRUCKS
SCANIA
SCHMIDT
SHAANXI
SHACMAN
SINOTRUK
STERLING
TATA DAEWOO
TATRA
TERBERG
TEREX
UD TRUCKS (NISSAN DIESEL)
VOLKSWAGEN TRUCKS
VOLVO TRUCKS
WESTERN STAR

BUS

AAGRALE
ALEXANDER DENNIS
ALLEGRO
AMZ
AUTODROMO
AUTOSAN
AYATS
BARBI
BCI
BEIFANG BENCHI
BEULAS
BLUE BIRD
BMC
BREDAMENARINI
CACCIAMALI
CAIO
CASTROSUA
CHEVROLET
COMIL
CREDO
CROBUS

DAEWOO BUS
DALLA VIA
DE SIMON
E-ONE
FAST
GOLDEN DRAGON
GULERYUZ
HEULIEZ BUS
HINO
HYUNDAI
IRISBUS
IRIZAR - CARROZZERIA +
ALTRI TELAI
IRIZAR - INTEGRAL
ISUZU
IVECO
IVECO LATIN AMERICA
KAMAZ
KARSAN
KING LONG
LEXEA
LIAZ
MAN
MARCOPOLLO
MAZ (BUS)
MCI
MERCEDES-BENZ (BRASIL /
ASIA PACIFIC)
MERCEDES-BENZ (EVOBUS)
MERKAVIM
MITSUBISHI FUSO
NEFAZ
NEOPLAN
NOGE
OPTARE
OTOKAR
PAZ
RAMPINI
RENAULT BUS
SCANIA
SETRA
SHENLONG
SITCAR
SOLARIS
SOLBUS
SOR
SUNSUNDEGUI

TATA HISPANO
TCV
TEMESA
TOYOTA
TOYOTA CAETANO
TVM-MARBUS
URSUS
VAN HOOL
VDL BERKHOF
VDL BOVA
VDL BUS & COACH
VDL BUS CHASSIS
VDL JONCKHEERE
VISEON BUS
VOLARE
VOLKSWAGEN BUS
VOLVO BUS
VOLZHANIN
WRIGHT BUS
YUTONG

LIGHT VEHICLES

AGRALE
CHEVROLET
CITROEN
DACIA
DAIHATSU
DODGE
FIAT
FORD
FREIGHTLINER
GAZ
GMC
GREAT WALL
HYUNDAI
ISUZU
IVECO
IVECO LATIN AMERICA
KIA
LAND ROVER
LDV
MAHINDRA
MAN
MAZDA
MERCEDES-BENZ
MERCEDES-BENZ (BRASIL /
ASIA PACIFIC)

MITSUBISHI
NISSAN
OPEL (GM)
PEUGEOT
PIAGGIO
RENAULT
SEAT
SKODA
SOLLERS FIAT
SSANGYONG
SUZUKI
TATA
TOYOTA
VICTORIA GIOTTI
VOLKSWAGEN


TRAILER AND SEMI TRAILERS


BENDIX
BPW
CARRIER TRANSICOLD
HALDEX
KNORR - BREMSE
MERITOR - WABCO
THERMO KING
WABASH
WABCO

POWER TRAIN

ALLISON
BENDIX
CATERPILLAR
CUMMINS
DETROIT - MBE
DEUTZ
EATON
INTERNATIONAL
MERCEDES BENZ
MTU
MWM
PACCAR
SCANIA
VOITH
VOLVO PENTA
WABCO
ZF

LEGEND

 Brands that offer updates in this version

 Brands that do not offer updates in this version



facebook.com/texacom



instagram.com/texacom



twitter.com/texacom



linkedin.com/company/texa



youtube.com/texacom



plus.google.com/+TEXAcom

WARNING

The trademarks and logos of vehicle manufacturers in this document have been used exclusively for information purposes and are used to clarify the compatibility of TEXA products with the models of vehicles identified by the trademarks and logos. Because TEXA products and software are subject to continuous developments and updates, upon reading this document they may not be able to carry out the DIAGNOSTICS of all the models and electronic systems of each vehicle manufacturer mentioned within this document. References to the makes, models and electronic systems within this document must therefore be considered purely indicative and TEXA recommends to always check the list of the "Systems that can be diagnosed" of the product and/or software at TEXA authorized retailers before any purchase.

The images and the vehicle outlines within this document have been included for the sole purpose of making it easier to identify the vehicle category (car, truck, motorbike, etc.) for which the TEXA product and/or software is intended. The data, descriptions and illustrations may change compared to those described in this document. TEXA S.p.A. reserves the right to make changes to its products without prior notice.

The BLUETOOTH brand is the property of Bluetooth SIG, Inc., U.S.A., and is used by TEXA S.p.A. under license.

Android is a trademark of Google Inc

Copyright TEXA S.p.A.

04/2018 - Inglese



To check out the extensive coverage of TEXA products, go to: **www.texa.com/coverage**

To check on IDC5 compatibility and minimum system requirements, go to: **www.texa.com/system**

TEXA

TEXA S.p.A.
Via 1 Maggio, 9
31050 Monastier di Treviso
Treviso - ITALY
Tel. +39 0422 791311
Fax +39 0422 791300
www.texa.com - info.it@texa.com

**COMPANY WITH
QUALITY SYSTEM
CERTIFIED BY DNV GL
= ISO 9001 =**